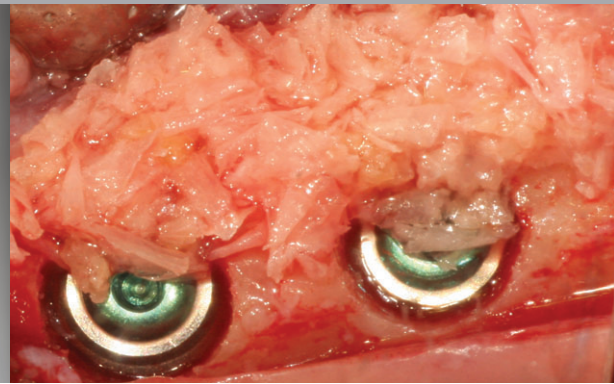
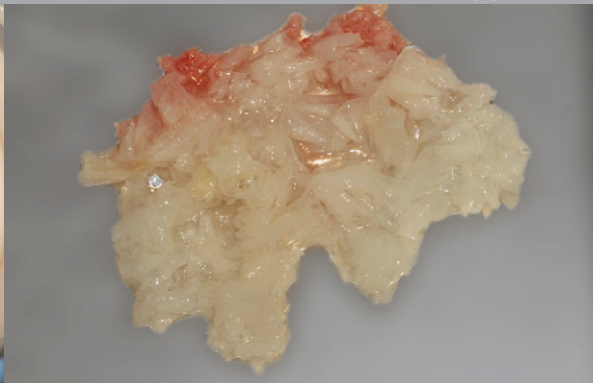


AutoBone Collector



• Collecting bone chips

- Bone chips with a thickness adequate for an easy GBR
- Bone chip collecting linked with SMARTmembrane™, Pore

• Cutting performance and durability

- Streamlined and stable cutting performance
- Optimal cutting performance with a twin blade configuration
- 50 times usage



• Excellent approaching and vibration-free

- Capable of approaching up to 15 degrees to the left and the right
- Front-end protruded point prevents vibration and sliding at initial drilling

• Ease of irrigation

- Easy irrigation thanks to the thin cutting blade configuration of the twin blade drill

How to use

- Separate the drill and the stopper, and disinfect them in the autoclave.
- Connect the stopper on the drill.
- Set the desired rotation rate (rpm) within the range of the surgical engine, between 300 and 600 rpm (300 rpm recommended for unskilled users).
- Collect autogenous bone while pumping, when performing irrigation.
- Once collection of autogenous bones is completed, grip the top of the stopper on the drill, and slowly separate the stopper from the drill. (Attempting separation of the stopper by gripping the bottom of the stopper may cause an advertent bouncing of the spring.)
- Use the Bone Ejector to remove any autogenous bone kept in the stopper, if required.

Cautions

- It is required to collect autogenous only after identifying locations of the blood vessels(artery) of the patient by making use of a CT prior to the surgery.
- Additional irrigation is required for preventing bone heating.
- Once collection of autogenous bones is completed, grip the top of the stopper and slowly separate the stopper from the drill in a careful manner to prevent bouncing of the spring.
- Keep the collected bones in a disinfected bowl prior to use.
- The recommended usage of the drill and metal stopper are 50 times, but plastic stopper is single use only.
- The drill and the stopper shall be cleaned and disinfected in the autoclave prior to surgery.

Components

AutoBone Collector

- Short Type
- Long Type

Type	Diameter	Length	Drill
Short	ø 7.0	14mm	ABCD7014S
Long	ø 7.0	17mm	ABCD7017L

Stopper

- Short Type
- Long Type

Type	Collected	Stopper
Short	4mm	ABCSNST7144S
Long	4mm	ABCSNST7174L

Bone Ejector

Bone Ejector
ABBE71L

